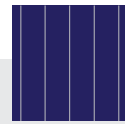


ZXP6-LD60 Series

Znshinesolar 5BB **Light-Weight** Double Glass Poly PV Module



Mono **Poly** Solutions

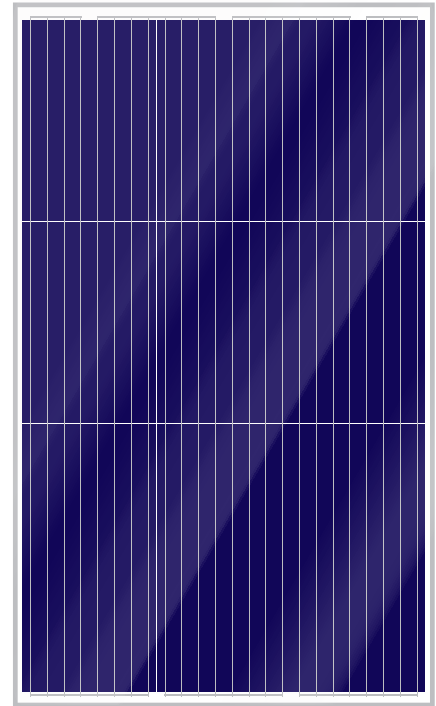
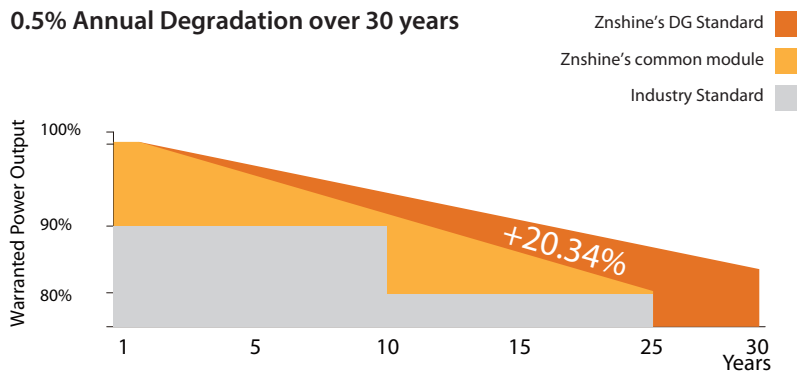
270W | 275W | 280W | 285W | 290W

Made with selected materials and components to grant quality, duration, efficiency and through outputs, the ZXP6-LD60 double glass modules by ZNSHINE SOLAR feature have both decorative and shading functions. They represent the perfect choice for BIPV and BAPV construction applications. This allows you to produce clean energy while reducing your energy bill.

ZNSHINE SOLAR'S ZXP6-LD60 double glass solar modules are tested and approved by international acknowledged laboratories, so that we can offer our customers a reliable and price-quality optimized product.

12 years workmanship warranty/30 years output warranty

0.5% Annual Degradation over 30 years



Innovative PV module

In comparison with common double glass modules, our modules are extremely robust and superior air tightness



High Efficiency

Graphene coating can increase about 2W of the module efficiency by rising around 0.5% of the light transmission



Anti PID

Limited power degradation of ZXP6-LD60 module caused by PID effect is guaranteed under strict testing condition for mass production



Better Weak Illumination Response

Lower temperature coefficient and wide spectral response, higher power output, even under low-light settings



Easy to install

The module is very light in weight so the installation is easier and transport costs are lower



Customerization

We can customize the graphene glass modules with self-cleaning function according to customer requirements
Graphene glass modules can increase light transmittance and increase component efficiency



ZNShine PV-Tech Co., LTD, founded in 1988, is a world-leading high-performance PV module manufacturer, PV power station developer, EPC and power station operator. With its state-of-the-art production lines, the company boasts module output of 5GW. Bloomberg has listed ZNShine as a global Tier 1 PV manufacturer and Top 4 reliable PV supplier.

ELECTRICAL PROPERTIES | STC*

Module Type	ZXP6-LD60 -270/P	ZXP6-LD60 -275/P	ZXP6-LD60 -280/P	ZXP6-LD60 -285/P	ZXP6-LD60 -290/P
Nominal Power Watt Pmax(W)	270	275	280	285	290
Power Output Tolerance Pmax(%)	0~+3	0~+3	0~+3	0~+3	0~+3
Maximum Power Voltage Vmp(V)	31.0	31.2	31.4	31.6	31.8
Maximum Power Current Imp(A)	8.71	8.82	8.92	9.02	9.12
Open Circuit Voltage Voc(V)	38.6	38.8	39.0	39.2	39.4
Short Circuit Current Isc(A)	9.07	9.16	9.25	9.34	9.42
Module Efficiency (%)	16.42	16.72	17.02	17.33	17.63

*STC (Standard Test Condition): Irradiance 1000W/m², Module Temperature 25°C, AM 1.5
 *The data above is for reference only and the actual data is in accordance with the practical testing

ELECTRICAL PROPERTIES | NMOT*

Maximum Power Pmax(Wp)	199.7	203.8	207.4	211.2	215.0
Maximum Power Voltage Vmpp(V)	29.0	29.3	29.5	29.7	29.8
Maximum Power Current Impp(A)	6.88	6.96	7.04	7.11	7.21
Open Circuit Voltage Voc(V)	35.6	35.7	35.9	36.1	36.3
Short Circuit Current Isc(A)	7.34	7.42	7.49	7.56	7.63

*NMOT(Nominal module operating temperature):Irradiance 800W/m²,Ambient Temperature 20°C,AM 1.5,Wind Speed 1m/s
 *The data above is for reference only and the actual data is in accordance with the practical testing

TEMPERATURE RATINGS

NMOT	45°C ±2°C
Temperature coefficient of Pmax	-0.40%/K
Temperature coefficient of Voc	-0.31%/K
Temperature coefficient of Isc	0.06%/K

MECHANICAL DATA

Solar cells	Poly 156.75×156.75 mm
Cells orientation	60 (6×10)
Module dimension	1658×992×30 mm(With Frame)
Weight	18.5kg
Glass	1.6+1.6mm heat strengthened glass
Junction box	IP 68, 3 diodes
Cables	4 mm ² ,350 mm
Connectors	MC4-compatible

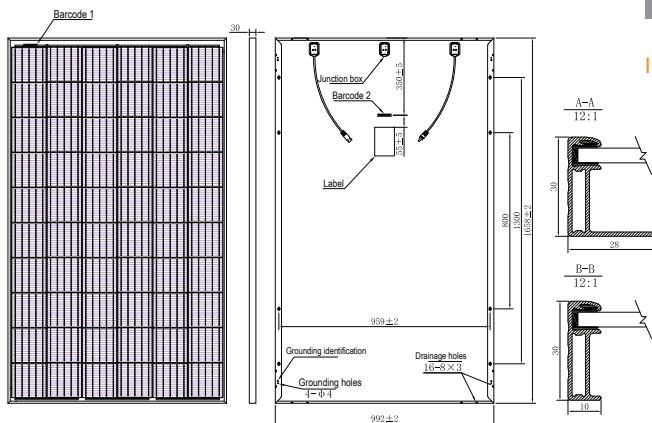
WORKING CONDITIONS

Maximum system voltage	1500 V DC
Operating temperature	-40°C~+85°C
Maximum series fuse	15 A
Maximum load(snow/wind)	5400 Pa / 2400 Pa

PACKAGING INFORMATION

Packing Type	40' HQ
Piece/Box	36
Piece/Container	1008/1064

DIMENSION OF THE PV MODULE (mm)



I-V CURVES OF THE PV MODULE

